

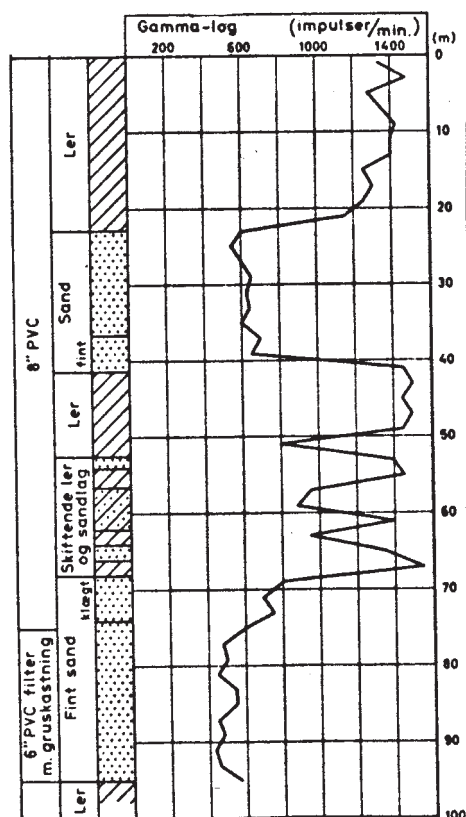
# Measurements in Geophysical boreholes

**GAMMA-LOG!** - Is the most suitable tool to determine the stratification - and with that, determination of intervals suitable for screening.

To comply with the demand of an accurate suitable instrumentations for this purpose, NUCLETRONICS has developed the gamma-log equipment consisting of:

Gamma-log probe with crystal of 25 mmØ x 50 mm  
Cabledrum with slip-rings and cable up to 150 metre  
Cable length measure with electrical pulse encoder  
Instrument type IMU 100 with software for gamma-log

Example:



*For more information please look in our description of :*

*Probes and accessories for natural gamma-log, flow-log, tracer investigations and other types for gamma measure*

*and*

*Portable nuclear measure instrument type 100 with software for natural gamma-log.*

The above example taken from an old measurement describes well the efficiency of the natural gamma-log.

From zero to a little more than 20 metre you have clay, from this point until 40 metre you have sand, then clay again until 50 metre, then alternately clay and sand until 70 metre, then fine sand and a little clay until 75 metre and then fine sand until 95 metre. You will have very good drinking water in fine sand and good too in sand.



**NUCLETRONICS ApS**

Klintevej 526 • Magleby, DK 4791 Borre

Tel: +45 5581 2074

Fax: +45 5581 2274

Mobil: +45 2021 6559

E-mail: hub@nucle.dk